

1T20692 | CUP brush - Twisted steel wire - Coarse scouring of the metal **TECHNIC** (Blister Box)

Aggressive brush for intensive use, for deburring tasks and the cleaning of welds



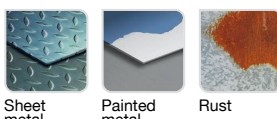
- Superior long life
- Quick-change shank
- Twisted wire
- Steel wire
- Cup shape



Machine



Application



Sheet metal

Painted metal

Rust

Features



Properties and benefits

- + Quick-Change hex attachment: a hexagonal recessed attachment for the quick locking and unlocking of the bit. Compliant with the DIN 3126 E6.3 standard ➡ Enables the quick changing of your bits by doing away with the manual tightening/loosening of the chuck. For drills and screwdrivers.
- + Twisted wire: material is twisted for more aggressive cleaning ➡ Enables thorough stripping thanks to the strength of the twisted bristles, without any need to apply pressure.
- + Steel wire: bristles that are highly resistant to wear and traction ➡ Enables stripping, rust removal, and the deburring of all your surfaces.
- + Cup shape: round geometry for use on flat surfaces. ➡ Enables simple stripping on flat and wide surfaces.

Code	EAN	Ø	Edge thickness	grain	Specificity	QTY	PCB
XT202520130	3221912072337	75	0,5		Spring steel wire	1	3