

## 1T50472 | Jigsaw blade - For stainless steel - U attachment **TECHNIC** (Blister)

High-speed steel, tempered in a vacuum furnace, is used for working the hardest of materials, such as metal (iron and steel), aluminium, and non-ferrous metals.



- Milled, set
- HSS toothing



### Machine



### Application



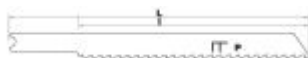
Stainless steel

### Features



### Properties and benefits

- + Milled, set: blade for somewhat crude cutting into hard and soft wood, aluminium, plastic materials, and non-ferrous metals. ⚙️ Enables the rapid progression of the blade into hard and soft wood, aluminium, plastic materials, and non-ferrous metals.
- + Bi-metal steel blade: combination of progressive toothing made from quick-cutting tempered steel (HSS), and the body made from high-strength carbon steel (HCS). ⚙️ Very flexible, used when there is a risk that the attachment will break. Very high resistance to wear, for a longer service life.



Code	EAN	Cutting thickness	Cutting type	Sawing cutting quality	L	I	Pitch	QTY	PCB
XT505320047	3221910898243	0.5-1	Straight cut	Finishing	75	50	2	3	