

1T50482 | Jigsaw blade - For plastic, Plexiglass and epoxy - U attachment **TECHNIC** (Blister)

Bi-metal, the perfect combination of flexibility (HSS "spring" steel), and durability (welded HSS teeth). Head treated in a vacuum furnace. Suitable for wood & metal working.



- Milled, set
- HSS toothing



Machine



Application



Plastic

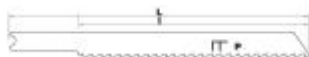
Plexiglas

Features



Properties and benefits

- + Milled, set: blade for somewhat crude cutting into hard and soft wood, aluminium, plastic materials, and non-ferrous metals. ➡ Enables the rapid progression of the blade into hard and soft wood, aluminium, plastic materials, and non-ferrous metals.
- + Bi-metal steel blade: combination of progressive toothing made from quick-cutting tempered steel (HSS), and the body made from high-strength carbon steel (HCS). ➡ Very flexible, used when there is a risk that the attachment will break. Very high resistance to wear, for a longer service life.



Code	EAN	Cutting thickness	Cutting type	Sawing cutting quality	L	I	Pitch	QTY	PCB
XT505326010	3221912082800	4	Straight cut	Finishing	75	50	2	1	