

1T50642 | Jigsaw blade - For plastic - U attachment ESSENTIAL (Blister)

High-alloy vanadium chrome steel is used for working on softer materials such as wood, fiberboard panels, and synthetic materials.



- Cross ground, tapered
- Carbon steel toothing



Machine



Application



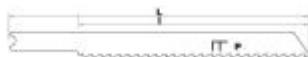
Plastic

Features



Properties and benefits

- + Cross ground, tapered: each tooth is perpendicular to the cutting axis, is aligned, and cuts along its entire width. The sides and the back are tapered. ⤵ Enables fast and straight cutting. The blade does not come back into contact with the material and enables a fine and clean cut.
- + Blade made from HCS carbon steel: high-strength carbon steel ideal for cutting into soft wood and non-abrasive carpentry materials. ⤵ Enables longer service life thanks to the flexibility of the blade.



Code	EAN	Cutting thickness	Cutting type	Sawing cutting quality	L	I	Pitch	QTY	PCB
XT505320034	3221910898113	4-30	Straight cut	Finishing	100	75	2.5	2	6