

## XT20102 | CUP brush - Twisted steel wire - Coarse scouring of the metal **ESSENTIAL** (Hanging cardboard)

Aggressive brush for intensive work, for all varnish sanding tasks and for the cleaning of welds

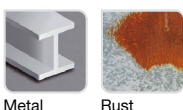


- Quick-change shank
- Twisted wire
- Steel wire
- Cup shape

### Machine



### Application



### Features



### Properties and benefits

- + Quick-Change hex attachment: a hexagonal recessed attachment for the quick locking and unlocking of the bit. Compliant with the DIN 3126 E6.3 standard ➔ Enables the quick changing of your bits by doing away with the manual tightening/loosening of the chuck. For drills and screwdrivers.
- + Twisted wire: material is twisted for more aggressive cleaning ➔ Enables thorough stripping thanks to the strength of the twisted bristles, without any need to apply pressure.
- + Steel wire: bristles that are highly resistant to wear and traction ➔ Enables stripping, rust removal, and the deburring of all your surfaces.
- + Cup shape: round geometry for use on flat surfaces. ➔ Enables simple stripping on flat and wide surfaces.

Code	EAN	Ø	Edge thickness	grain	Specificity	QTY	PCB
XT20252006049	3128820060497	75	0,5		Spring steel wire	1	3