

XT20302 | CIRCULAR brush - Twisted steel wire - Stripping of metal ESSENTIAL (Hanging cardboard)

For jobs involving the cleaning of tubes, deburring, removal of lacquer and rust.

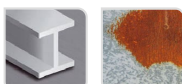


- Adaptable to fit grinders
- Twisted wire
- Steel wire
- Circular shape

Machine



Application



Metal

Rust

Features

**M
14**

Properties and benefits

- + M14 attachment adaptable to fit grinders: threading specifically for fixing onto grinders. ➡ Universal and secure attachment that can be adapted to suit all grinders Ø115, 125, 230. Select the brush diameters based on your grinder.
- + Twisted wire: material is twisted for more aggressive cleaning ➡ Enables thorough stripping thanks to the strength of the twisted bristles, without any need to apply pressure.
- + Steel wire: bristles that are highly resistant to wear and traction ➡ Enables stripping, rust removal, and the deburring of all your surfaces.
- + Circular shape: circular geometry for use on edges. ➡ Enables simple stripping on narrow surfaces.

Code	EAN	Ø	Edge thickness	grain	Specificity	QTY	PCB
XT20252006005	3128820060053	95	0,5		Spring steel wire	1	1