

For stripping work, the removal of rust, limescale, incrustations and burrs.

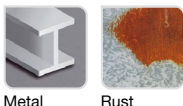


- Adaptable to fit grinders
- Corrugated wire
- Steel wire
- Cup shape

Machine



Application



Metal Rust

Features

**M
14**

Properties and benefits

- + M14 attachment adaptable to fit grinders: threading specifically for fixing onto grinders. ⤷ Universal and secure attachment that can be adapted to suit all grinders Ø115, 125, 230. Select the brush diameters based on your grinder.
- + Corrugated wire: light stripping of your surfaces, thanks to the crimped material. ⤷ Enables the gentle brushing of your surfaces with no need to apply pressure.
- + Steel wire: bristles that are highly resistant to wear and traction ⤷ Enables stripping, rust removal, and the deburring of all your surfaces.
- + Cup shape: round geometry for use on flat surfaces. ⤷ Enables simple stripping on flat and wide surfaces.

Code	EAN	Ø	Edge thickness	grain	Specificity	QTY	PCB
XT20211000369	3128820003692	75	0,35		Corrugated steel	1	6