

For stripping work, such as the removal of paint, rust, limescale, incrustations and burrs.

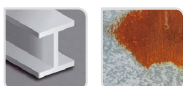


- Quick-change shank
- Corrugated wire
- Steel wire
- Pencil brush

Machine



Application



Metal Rust

Features



Properties and benefits

- + Quick-Change hex attachment: a hexagonal recessed attachment for the quick locking and unlocking of the bit. Compliant with the DIN 3126 E6.3 standard → Enables the quick changing of your bits by doing away with the manual tightening/loosening of the chuck. For drills and screwdrivers.
- + Corrugated wire: light stripping of your surfaces, thanks to the crimped material. → Enables the gentle brushing of your surfaces with no need to apply pressure.
- + Steel wire: bristles that are highly resistant to wear and traction → Enables stripping, rust removal, and the deburring of all your surfaces.
- + Pencil shape: tube-type geometry for use in tight spaces. → Enables simple stripping in difficult to access spaces and corners.

Code	EAN	Ø	Edge thickness	grain	Specificity	QTY	PCB
XT20252006063	3128820060633	18	0,35		Corrugated steel	1	3
XT20252006064	3128820060640	22	0,35		Corrugated steel	1	3
XT20252006065	3128820060657	28	0,35		Corrugated steel	1	3