

XT20642 | CUP brush - Stainless steel wire - Scouring of stainless steel ESSENTIAL (Hanging cardboard)

For the cleaning, brushing and scouring of surfaces in stainless steel, aluminium, and other non-ferrous metals

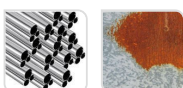


- Quick-change shank
- Corrugated wire
- Stainless steel wire
- Circular shape

Machine



Application



Stainless steel Rust

Features



Properties and benefits

- + Quick-Change hex attachment: a hexagonal recessed attachment for the quick locking and unlocking of the bit. Compliant with the DIN 3126 E6.3 standard → Enables the quick changing of your bits by doing away with the manual tightening/loosening of the chuck. For drills and screwdrivers.
- + Corrugated wire: light stripping of your surfaces, thanks to the crimped material. → Enables the gentle brushing of your surfaces with no need to apply pressure.
- + Stainless steel wire: stainless wire that is highly resistant to high temperatures. → Enables the stripping of all of your surfaces, even in humid locations. Does not rust.
- + Circular shape: circular geometry for use on edges. → Enables simple stripping on narrow surfaces.

Code	EAN	Ø	Edge thickness	grain	Specificity	QTY	PCB
XT20252006072	3128820060725	75	0,35		Stainless steel	1	3