

1T20332 | CONICAL brush - Corrugated steel wire - Stripping of metal TECHNIC (Blister)

For angle-stripping tasks, and for the removal of rust, limescale, incrustations and burrs.

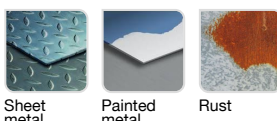


- Superior long life
- Adaptable to fit grinders
- Corrugated wire
- Steel wire
- Conical brush

Machine



Application



Sheet metal

Painted metal

Rust

Features



Properties and benefits

- + M14 attachment adaptable to fit grinders: threading specifically for fixing onto grinders. ➡ Universal and secure attachment that can be adapted to suit all grinders Ø115, 125, 230. Select the brush diameters based on your grinder.
- + Corrugated wire: light stripping of your surfaces, thanks to the crimped material. ➡ Enables the gentle brushing of your surfaces with no need to apply pressure.
- + Steel wire: bristles that are highly resistant to wear and traction ➡ Enables stripping, rust removal, and the deburring of all your surfaces.
- + Conical shape: cymbal-type geometry for use at an incline of approx. 30°. ➡ Enables simple stripping in interior corners, to eliminate residues.

Code	EAN	Ø	Edge thickness	grain	Specificity	QTY	PCB
XT202520138	3221912128966	100	0,30		Corrugated steel	1	1