

Mixed set containing different shapes of M14 brush, for the coarse stripping of metal. For use on a grinder.



- Corrugated wire
- Twisted wire

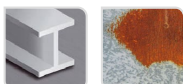
1 cup brush Ø 100 mm + 1 conical brush Ø 100 mm + 1 twisted brush Ø 100 mm



Machine



Application



Metal

Rust

Features

**M
14**

Properties and benefits

- + Corrugated wire: light stripping of your surfaces, thanks to the crimped material. ➡ Enables the gentle brushing of your surfaces with no need to apply pressure.
- + Twisted wire: material is twisted for more aggressive cleaning ➡ Enables thorough stripping thanks to the strength of the twisted bristles, without any need to apply pressure.

Données de gestion :

PCB : 3 / Kilogram. : 0,939 / Dimensions : 0230x0150x0090 mm / EAN : 3221912259783