

Aggressive brush for intensive use, for deburring tasks and the cleaning of welds



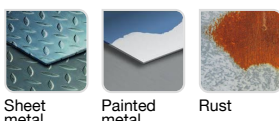
- Superior long life
- Quick-change shank
- Corrugated wire
- Steel wire
- Pencil brush



#### Machine



#### Application



#### Features



#### Properties and benefits

- + Quick-Change hex attachment: a hexagonal recessed attachment for the quick locking and unlocking of the bit. Compliant with the DIN 3126 E6.3 standard ➡ Enables the quick changing of your bits by doing away with the manual tightening/loosening of the chuck. For drills and screwdrivers.
- + Corrugated wire: light stripping of your surfaces, thanks to the crimped material. ➡ Enables the gentle brushing of your surfaces with no need to apply pressure.
- + Steel wire: bristles that are highly resistant to wear and traction ➡ Enables stripping, rust removal, and the deburring of all your surfaces.
- + Pencil shape: tube-type geometry for use in tight spaces. ➡ Enables simple stripping in difficult to access spaces and corners.

Code	EAN	Ø	Edge thickness	grain	Specificity	QTY	PCB
XT202520129	3221912072320	24	0,5		Corrugated steel	1	3