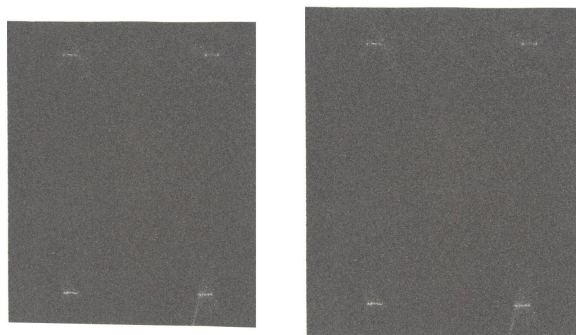


Stripping, dry and wet sanding of ferrous metals, non-ferrous metals, rust



■ Emery grain

**Machine**



**Application**



Metal

Rust

**Properties and benefits**

+ Emery grain: comprised of spinel and corundum ↻ For the manual sanding of metals, with or without water.

Code	EAN	Dim/Ø	grain	Sanding level	QTY	PCB
XT10134013140	3128820131401	230x280	50		1	50
XT10134013141	3128820131418	230x280	80		1	50
XT10134013142	3128820131425	230x280	120		1	50
XT10134013143	3128820131432	230x280	150		1	50