

XT20011 | CIRCULAR brush - Corrugated steel wire - Stripping of metal ESSENTIAL (Bulk)

For stripping work, the removal of paint, rust, limescale, incrustations and burrs.

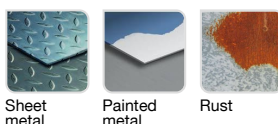


- Cylindrical shank
- Corrugated wire
- Steel wire
- Circular shape

Machine



Application



Sheet metal

Painted metal

Rust

Features



Properties and benefits

- + Cylindrical shank: rectified cylindrical shank, standard, without flats. ➡ Suitable for all types of drill.
- + Corrugated wire: light stripping of your surfaces, thanks to the crimped material. ➡ Enables the gentle brushing of your surfaces with no need to apply pressure.
- + Steel wire: bristles that are highly resistant to wear and traction ➡ Enables stripping, rust removal, and the deburring of all your surfaces.
- + Circular shape: circular geometry for use on edges. ➡ Enables simple stripping on narrow surfaces.

Code	EAN	Ø	Edge thickness	grain	Specificity	QTY	PCB
XT20211000201	3128820002015	38	0,35		Corrugated steel	1	12
XT20211000202	3128820002022	50	0,35		Corrugated steel	1	12
XT20211000203	3128820002039	75	0,35		Corrugated steel	1	12
XT20211000204	3128820002046	100	0,35		Corrugated steel	1	12