

XT20122 | PENCIL brush - Corrugated steel wire - Stripping of the metal ESSENTIAL (Bulk)

For stripping jobs, such as the removal of paint, rust, limescale, incrustations and burrs.

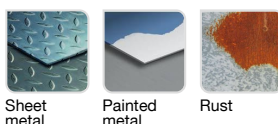


- Cylindrical shank
- Corrugated wire
- Steel wire
- Pencil brush

Machine



Application



Sheet metal

Painted metal

Rust

Features



Properties and benefits

- + Cylindrical shank: rectified cylindrical shank, standard, without flats. ➡ Suitable for all types of drill.
- + Corrugated wire: light stripping of your surfaces, thanks to the crimped material. ➡ Enables the gentle brushing of your surfaces with no need to apply pressure.
- + Steel wire: bristles that are highly resistant to wear and traction ➡ Enables stripping, rust removal, and the deburring of all your surfaces.
- + Pencil shape: tube-type geometry for use in tight spaces. ➡ Enables simple stripping in difficult to access spaces and corners.

Code	EAN	Ø	Edge thickness	grain	Specificity	QTY	PCB
XT20212000270	3128820002701	28	0,35		Corrugated steel	1	12