

XT20352 | SWAB brush - Corrugated steel wire - Stripping of metal ESSENTIAL (Blister)

For jobs involving the cleaning of tubes, deburring, removal of lacquer and rust.

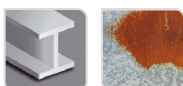


- Corrugated wire
- Steel wire
- Swab shape

Machine



Application



Metal

Rust

Features



Properties and benefits

- + Corrugated wire: light stripping of your surfaces, thanks to the crimped material. ➡ Enables the gentle brushing of your surfaces with no need to apply pressure.
- + Steel wire: bristles that are highly resistant to wear and traction ➡ Enables stripping, rust removal, and the deburring of all your surfaces.
- + Swab shape: cylindrical-type geometry mounted on a shaft. ➡ Enables rapid stripping in tight spaces. Insides of tubes, curves, doorways.

Code	EAN	Ø	Edge thickness	grain	Specificity	QTY	PCB
XT20252006075	3221910899356	28	0,35		Corrugated steel	1	1
XT20252006076	3221910899363	20	0,35		Corrugated steel	1	1
XT20252006077	3221910899370	38	0,35		Corrugated steel	1	1